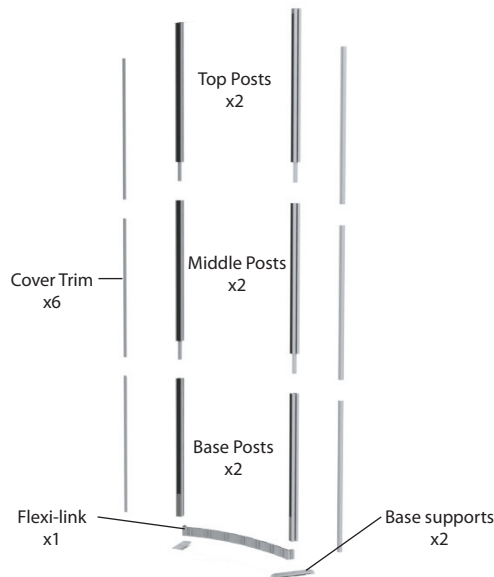


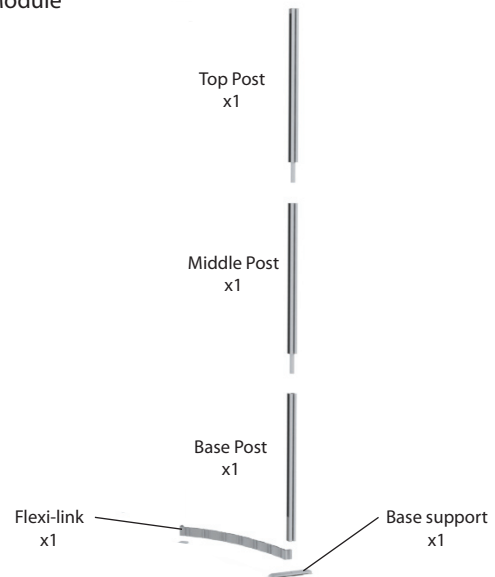
Assembly Instructions

Parts

Starter Module

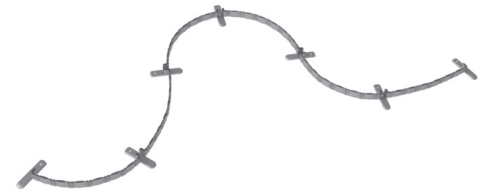


Extension Module



Step 1

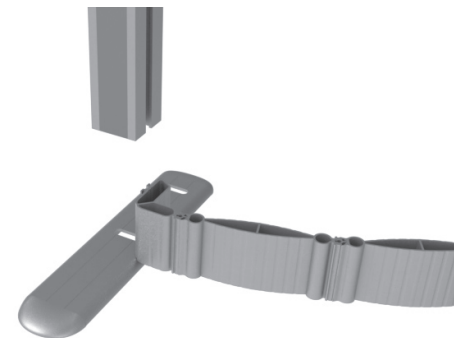
Layout the flexi-links and base supports on the floor in the approximate final shape.



Step 2

Open the clamp on the first base post, slide in the flexi-link and attach the base support by closing the clamp.

IMPORTANT if any resistance is felt when closing the clamp please re-position it as forcing the clamp closed will damage it.



Step 3

Repeat step 2 with the next base post but insert both the first and second flexi links.



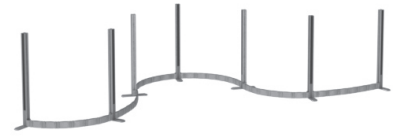
Assembly Instructions

Step 4

Repeat step 3 until the desired length is achieved,

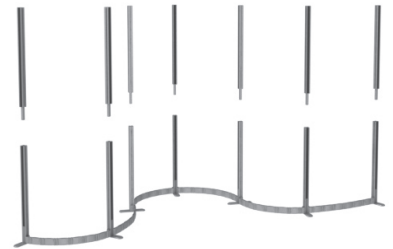
IMPORTANT Now arrange the display to create the desired shape ensuring the flexi-links 'blend' seamlessly from one post to the next.

Each 800mm section can be flexed both ways up to 180°



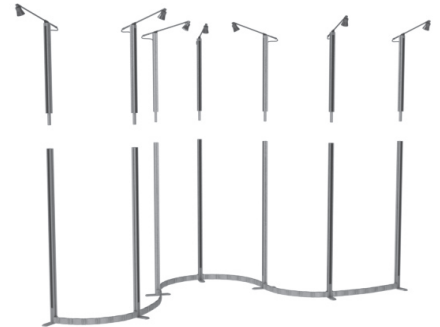
Step 5

Lower the middle posts onto the base posts



Step 6

Insert spot lights into the top posts if supplied and lower the top posts into the mid posts

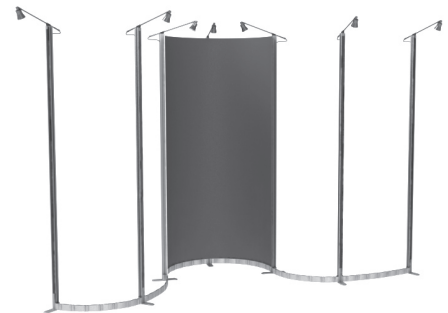


Step 7

Starting at the centre of the display apply the graphics.

IMPORTANT Ensure that the graphics project 10-15mm above the top of the framework. If the graphic is not level it will create problems when the remaining graphics are applied.

Apply the remaining graphics.



Step 8

Apply corner trim to each end of the display and where the graphics meet at a 90° outside corner

